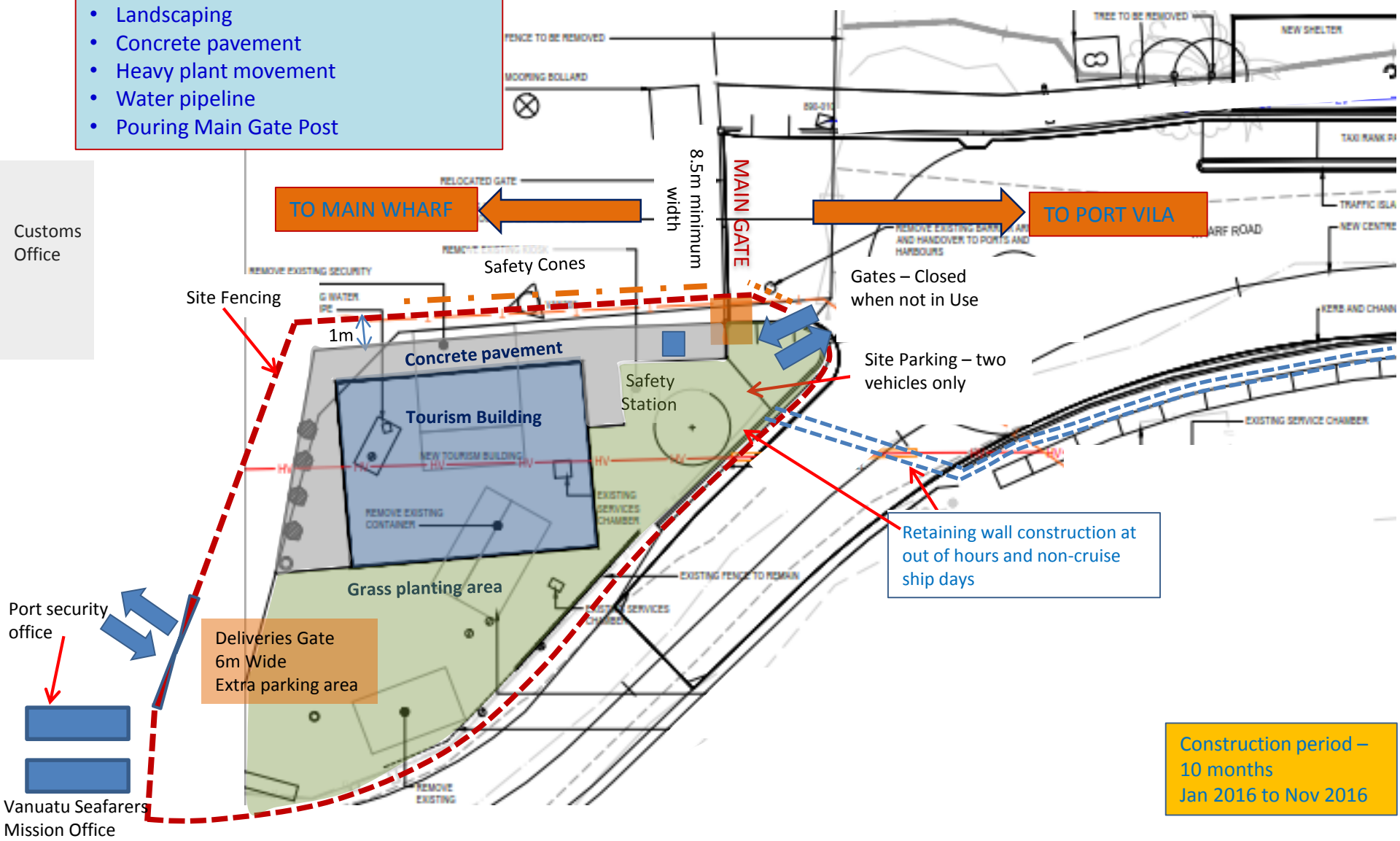


PORT SIDE WORKS Phase 1

Phase 1

- Tourism building
- Site clearance
- Demolition of existing structures
- Landscaping
- Concrete pavement
- Heavy plant movement
- Water pipeline
- Pouring Main Gate Post

Port Vila Harbour

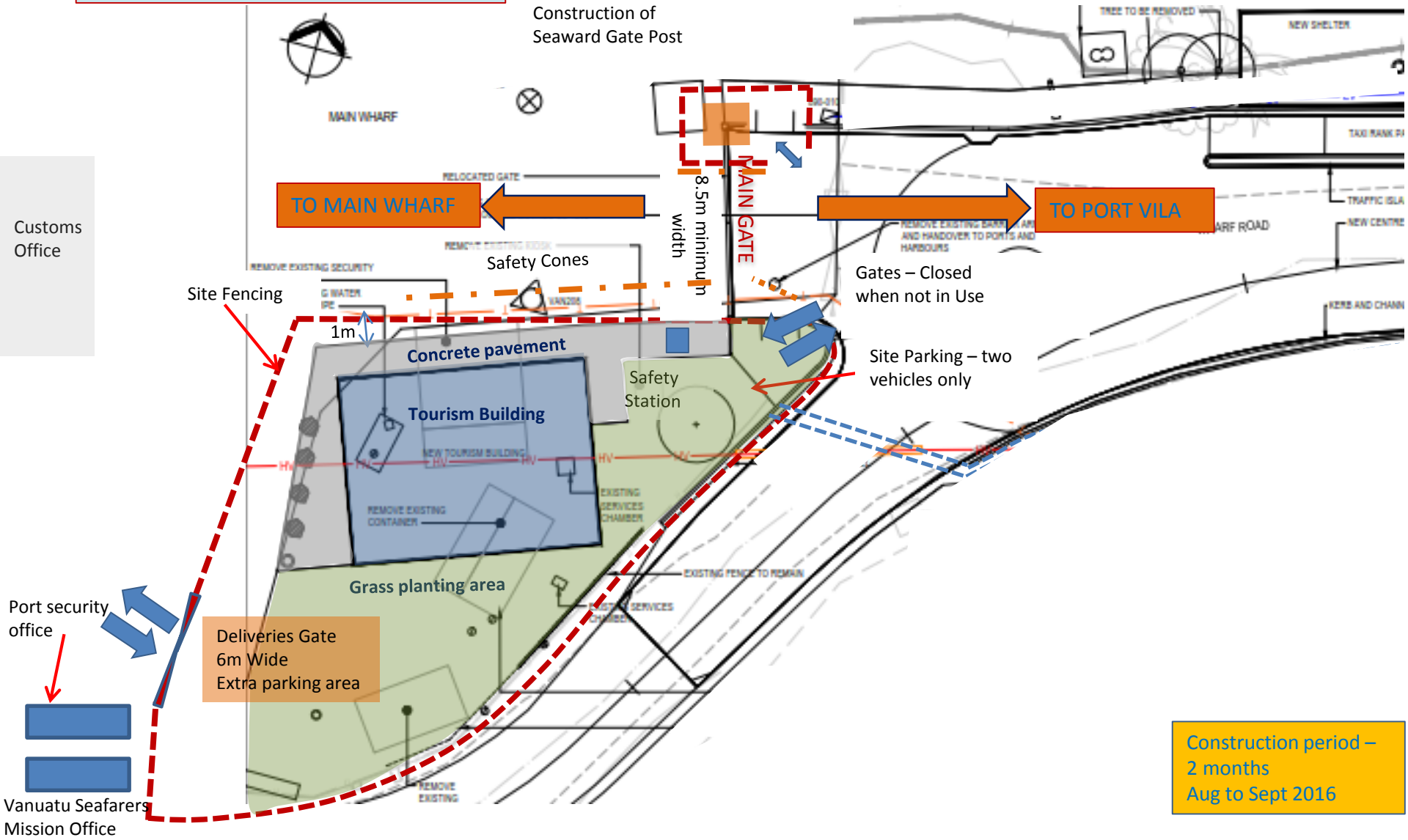


Construction period –
10 months
Jan 2016 to Nov 2016

PORT SIDE WORKS Phase 2

- Phase 2**
- Heavy plant movement
 - Refurbishment of Main Gate
 - Pouring Main Gate Post

Port Vila Harbour

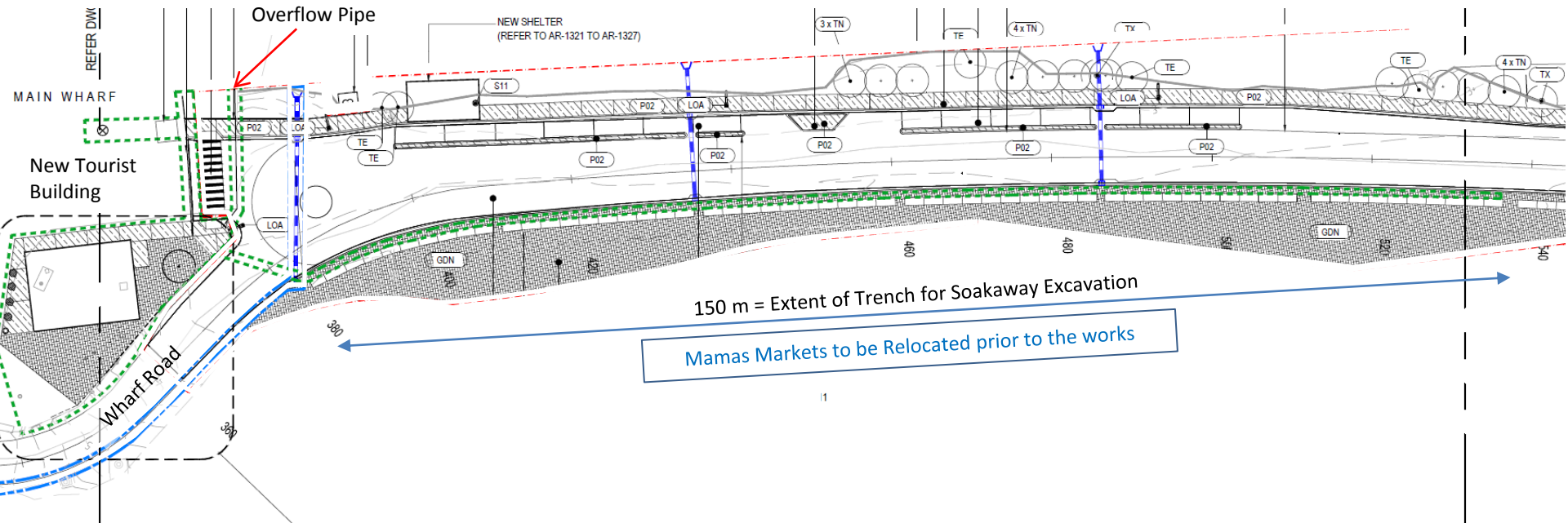


Construction period –
2 months
Aug to Sept 2016

PORT SIDE WORKS Phase 3

Phase 3

- Roadworks & Excacation
- Temporary Road Closure (very short duration).



Mamas Markets to be Relocated prior to the works

Soak-away and Overflow Construction during out of hours and non-cruise ship days

Soak away construction period - 2 weeks (Jun-16)