

# The Port Vila Lapetasi International Multi-Purpose Wharf Development Project

Newsletter - March 2016

## Project Details:

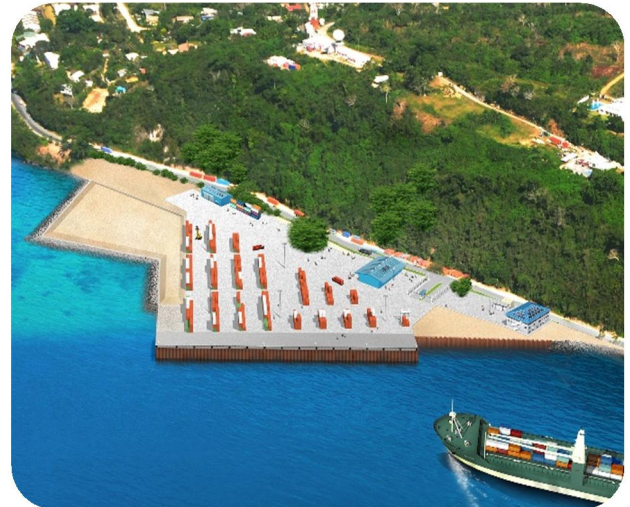
Employer : Ministry of Infrastructure and Public Utilities (MIPU)

Engineer : ECOH-JV, Japan

Contractor : TOA Corporation, Japan

Commencement date : October 2015

Completion Date : October 2017



Completed Image of New Wharf

## Scope of Work:

### Civil Works:

- \* Wharf 200 m
- \* Dredging 85,000 m<sup>3</sup>
- \* Reclamation 140,600 m<sup>3</sup>
- \* Revetment 470 m
- \* Container Yard 32,600 m<sup>2</sup>

### Building Works:

- \* Administration Building (3 Stories)
- \* Container Freight Station
- \* Workshop Building
- \* Reefer Container Tower
- \* Container Wash Bay



Present Site Situation



Pile Driving

**Progress: Total : 13%**

### Civil Works:

Piling Works for Wharf 28 %  
 Revetment Works: 19%

### Building Works:

In Progress:  
 \* Administration Building

### Temporary Works:

Completed Structure:  
 \* Engineer's Site Office

# The Port Vila Lapetasi International Multi-Purpose Wharf Development Project

## Impact on Traffic and Community:

March 2016 is expected to be another busy month for the Lapetasi International Multi-Purpose Wharf Development Project. The community is reminded of the following impact:

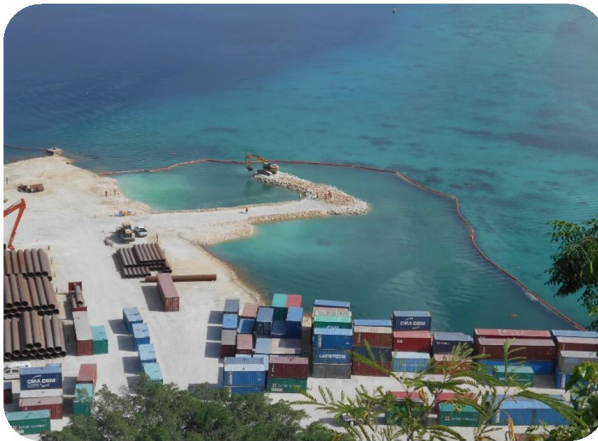
- Increase of traffic volume especially from the junction to the wharf entrance by heavy vehicles transporting construction materials.
- Access to the construction area is strictly restricted to the public. Only safety inducted workers with safety gears are allowed of entry.

## Ni-Vanuatu Participation:

More than 100 Ni-Vanuatu workers are engaged in various construction activities at the project site.

## Silt Fence:

East side of the construction site is enclosed by silt fence to prevent any turbidity from flowing out from the project boundary.



**Silt Fence Installation**



**Gate Control**

## Contractor:

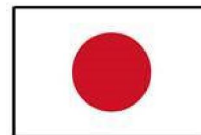


**TOA CORPORATION**  
Tokyo, Japan

## Consultant:

Joint Venture of:

**ECOH CORPORATION,**  
**Oriental Consultants Company Limited and**  
**Japan Port Consultants, Ltd**  
Tokyo, Japan



*The Port Vila Lapetasi International Multi-Purpose Wharf Development Project is funded by Japanese ODA loan as a token of Friendship and Cooperation between Japan and Vanuatu. For further information, contact the Vanuatu Project Management Unit on 33240 or email [vpmu@vanuatu.gov.vu](mailto:vpmu@vanuatu.gov.vu).*

