

The Port Vila Lapetasi International Multi-Purpose Wharf Development Project

Newsletter - July 2016

Project Details:

Employer : Ministry of Infrastructure and Public Utilities (MIPU)

Engineer : ECOH-JV, Japan

Contractor : TOA Corporation, Japan

Commencement date : October 2015

Completion Date : October 2017



Completed Image of New Wharf

Scope of Work:

Civil Works:

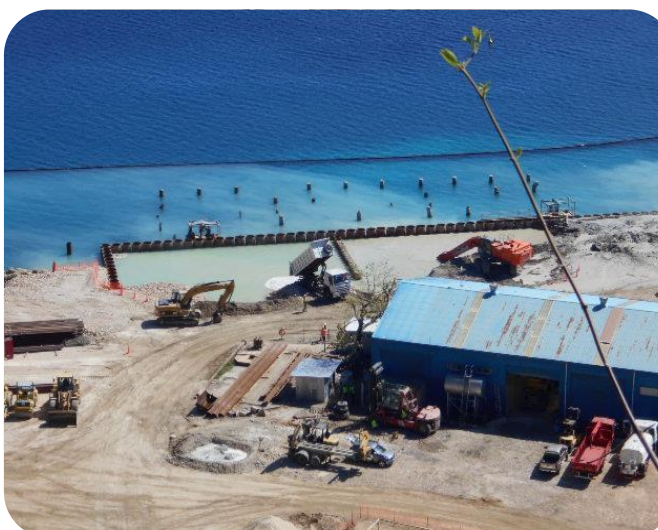
- * Wharf 200 m
- * Dredging 85,000 m³
- * Reclamation 140,600 m³
- * Revetment 470 m
- * Container Yard 32,600 m²

Building Works:

- * Administration Building (3 Stories)
- * Container Freight Station
- * Workshop Building
- * Reefer Container Tower
- * Container Wash Bay



Present Site Situation



Excavation and Filling Works

Progress: Total : 30%

Civil Works:

Piling Works for Wharf 82%

Revetment Works (Rubble Rocks) 67%

Reclamation Works 29%

Wharf Excavation 17%

Dredging Works 13%

Building Works:

Administration Building 8%

Workshop Building 4%

Container Freight Station 3%

Temporary Works:

Engineer's Site Office Completed

The Port Vila Lapetasi International Multi-Purpose Wharf Development Project

Impact on Traffic and Community:

July 2016 is another busy month for the Lapetasi International Multi-Purpose Wharf Development Project. Piling, Excavation, Backfilling and Dredging works is done simultaneously with the construction of Administration building, Workshop building and Container Freight Station. Again, the community is reminded of the following impact:

- Increase of traffic volume especially from the junction to the wharf entrance by heavy vehicles transporting construction materials.
- Access to the construction area is strictly restricted to the public. Only safety inducted workers with safety gears are allowed of entry.
- New traffic rule and souvenir stall arrangement was introduced in Port Vila Road from June 5th, 2016. Drivers and shopkeepers cooperation is appreciated.

Ni-Vanuatu Participation:

More than 150 Ni-Vanuatu workers are engaged in various construction activities at the project site.

Silt Fence:

East and West sides of the construction site is enclosed by silt fence to prevent any turbidity from flowing out from the project boundary.



Silt Fence Installation



Administration Building in Progress

Contractor:



Consultant:

Joint Venture of:
ECOH CORPORATION,
Oriental Consultants Company Limited and
Japan Port Consultants, Ltd
Tokyo, Japan



The Port Vila Lapetasi International Multi-Purpose Wharf Development Project is funded by Japanese ODA loan as a token of Friendship and Cooperation between Japan and Vanuatu. For further information, contact the Vanuatu Project Management Unit on 33240 or email vpmu@vanuatu.gov.vu.

